

Aim: How & why did early civilizations develop along the Indus River?

- **Do Now:** Using this map and your knowledge of geography, what is:
- The name of the modern country the Indus River Valley is located in?
- The name of the continent on which it is located?



Indian Subcontinent



- **Subcontinent:** A large region that is part of a continent, but is separated from the rest of the continent in some way.

Indian Subcontinent:
India, Pakistan,
Bangladesh

Geography of Indus River Valley

- A wall of mountains separates South Asia from the rest of the continent.
- Hindu Kush, Karakoram, Himalayan



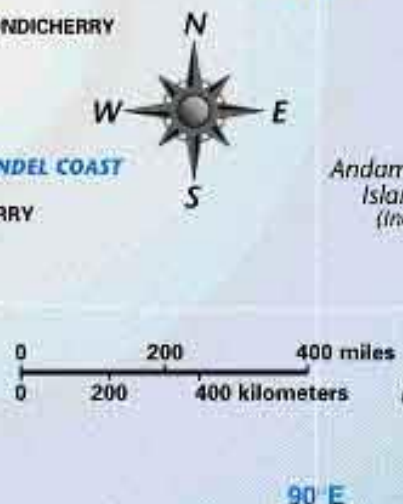


GENERAL REFERENCE MAP OF THE INDIAN SUBCONTINENT AND SRI LANKA

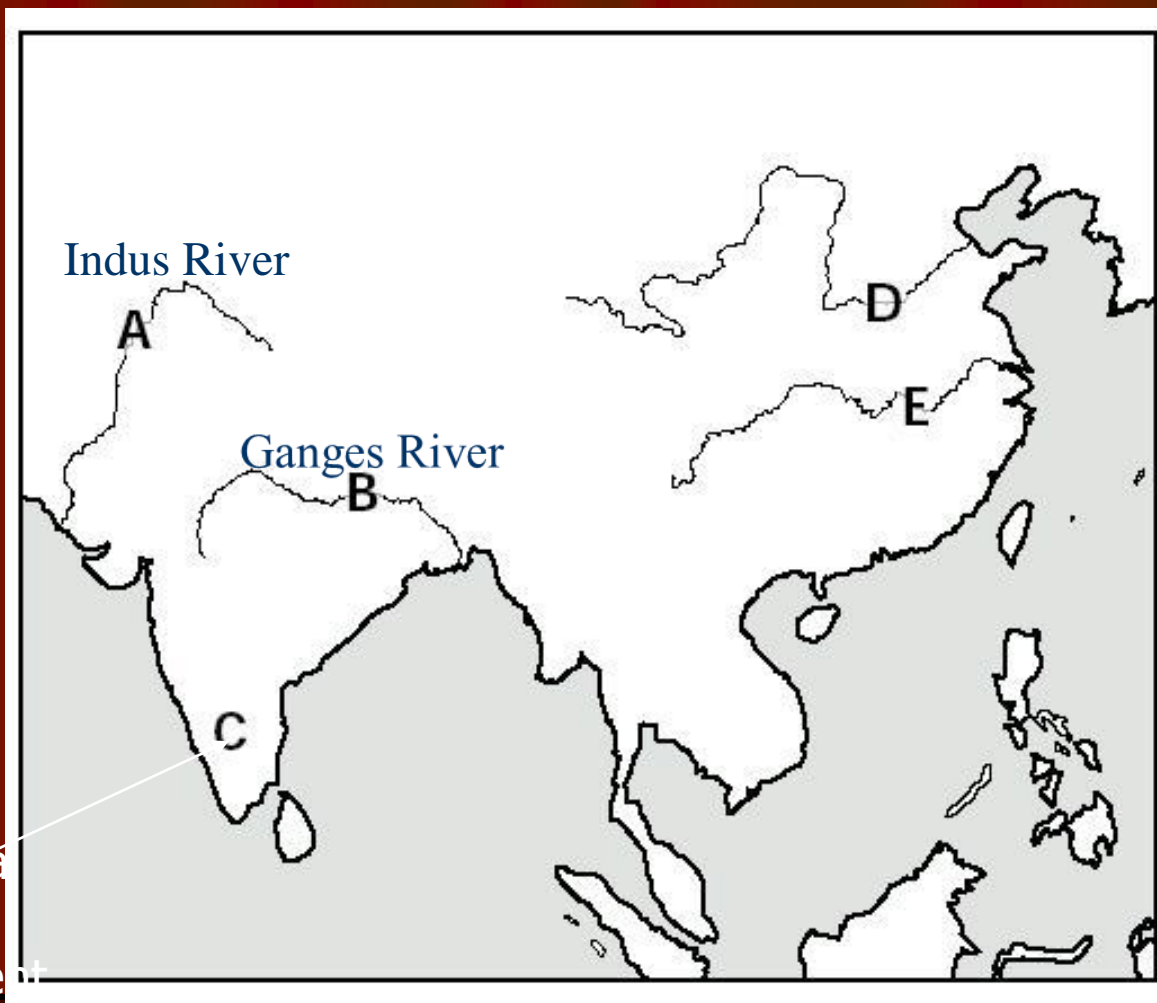
URBAN AREAS
Stars show national capitals.

- ★ (in circle) Over 8,000,000
- 2,000,000–8,000,000
- ☆ (in circle) 500,000–2,000,000 (selected places)
- Selected smaller cities

City-size symbols are based on metropolitan area estimates.



Identification of Geographic Features in India



Peninsula
and/or
Subcontinent



Himalayan Mountains

Himalayan Mountains -
surrounded on the
north and northwest



Can Isolation Be A Good Thing?



- **Geographical Isolation Leads to Unique Culture!**
- **Protection: Blocked Indus River Valley from invaders from other parts of Europe & Asia**





- **Deserts offer protection**
- **The Thar Desert protected Indus River Valley from invaders from the East!**

Benefits of Geography



Indus & Ganges Rivers

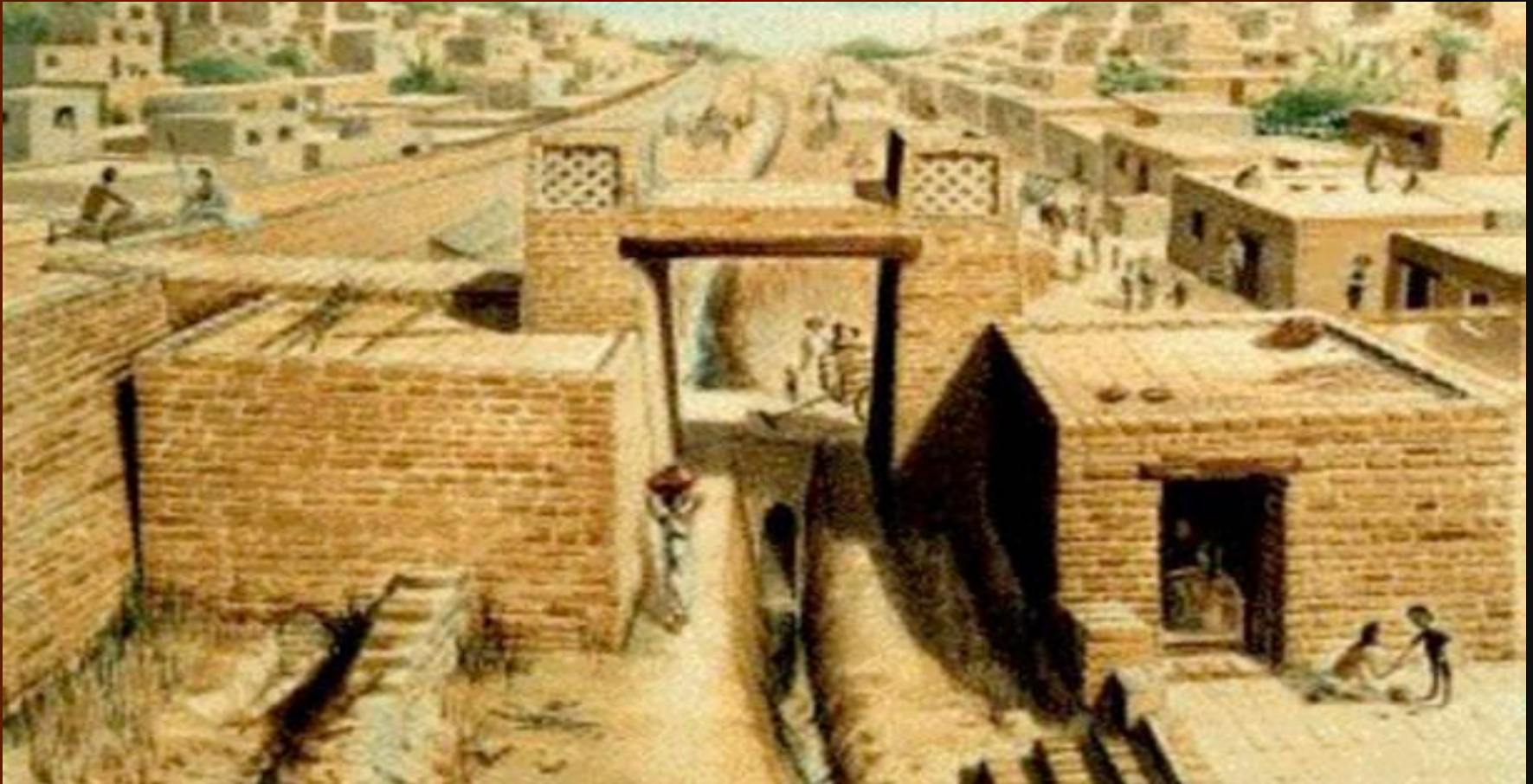
- Rivers flooded & left silt on river banks which produced....
- Fertile land for crops

Civilization in the Indus River Valley Begins

- About 2500 BCE, about the time when the pyramids were rising in Egypt, the first Indian civilizations were forming in the Indus River Valley.
- Little is known about these civilizations
- **Harappa** and **Mohenjo-Daro**
 - most likely twin capital cities.

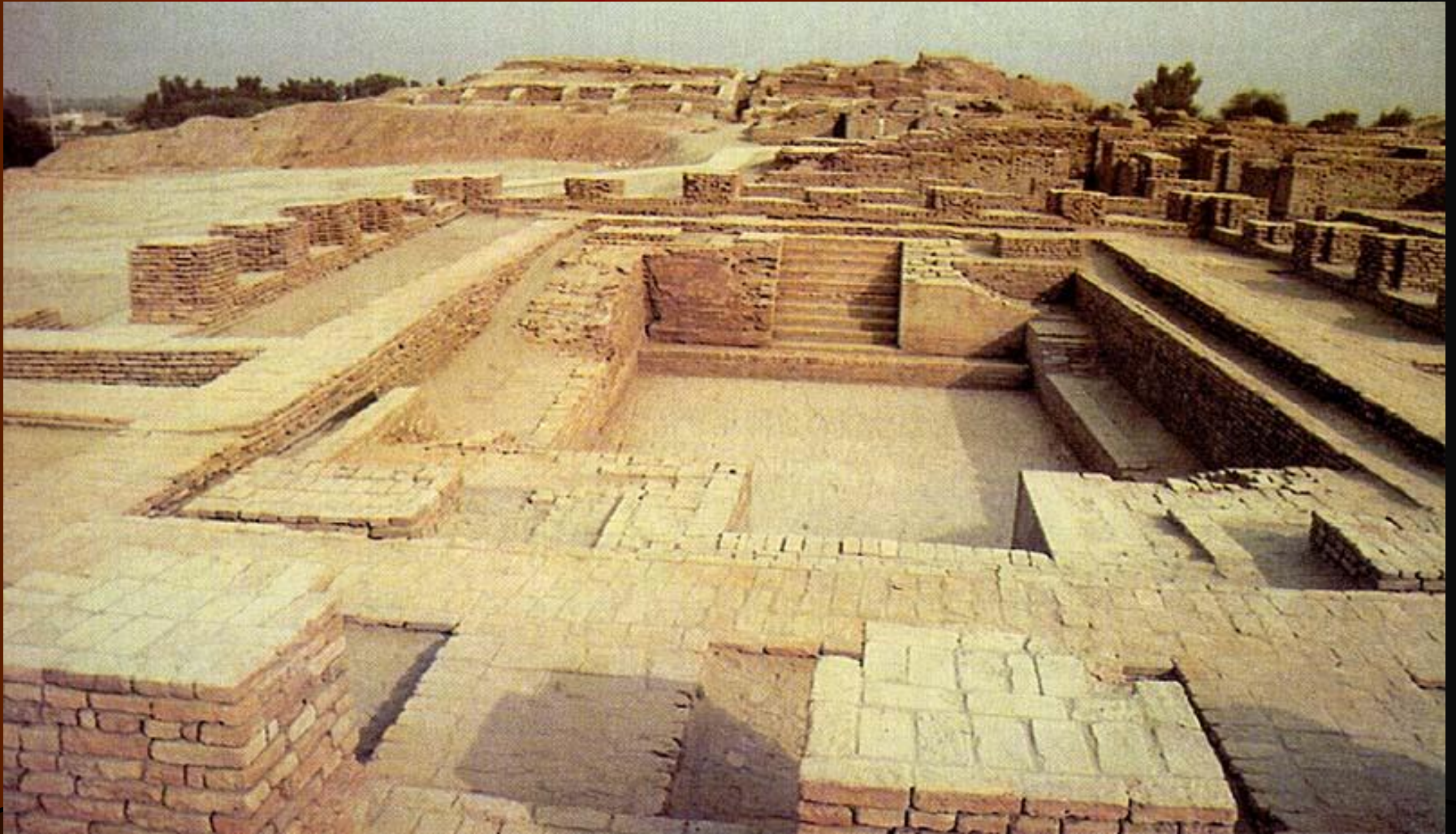


Remarkable Achievements



Sophisticated City Planning

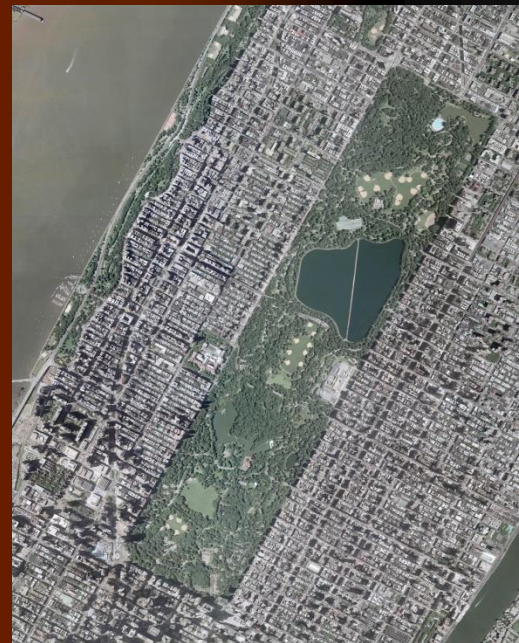
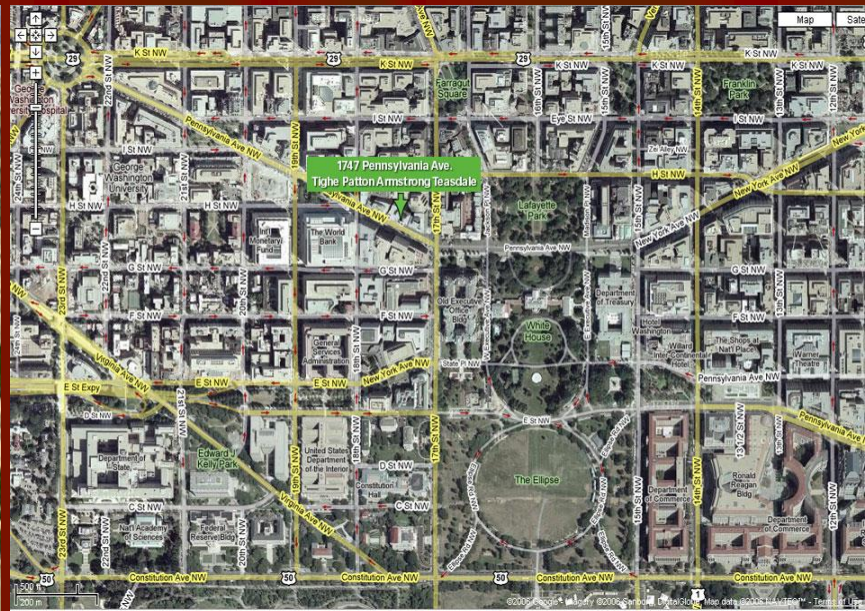
Cities were built using what is called a grid system





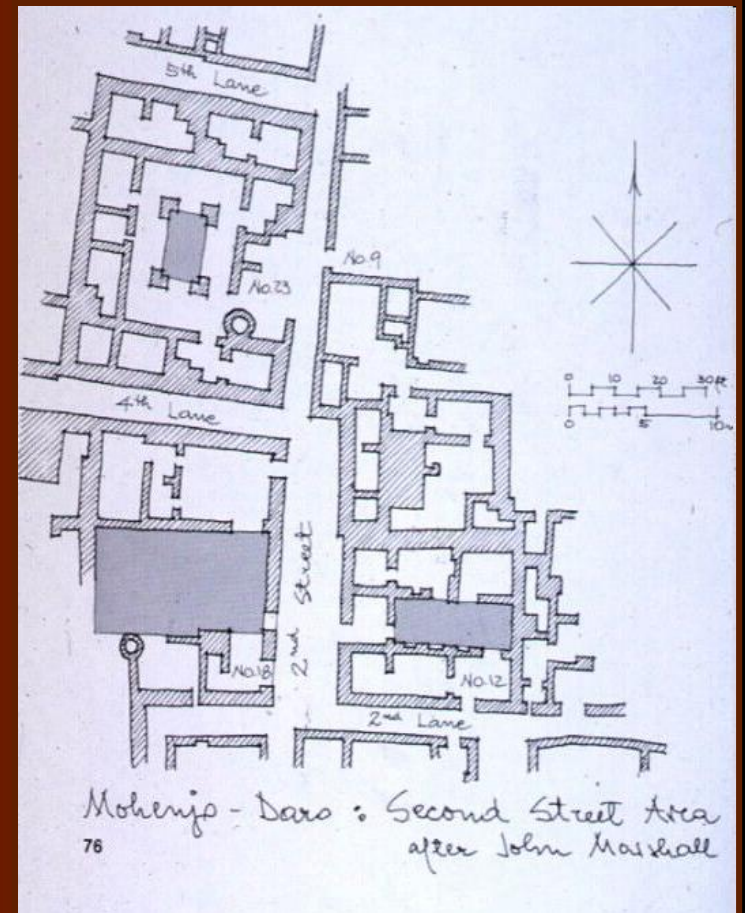


28



Planned Cities on the Indus

- Planned urban centers of Mohenjo-Daro & Harappa
 - Cities laid out on a grid (Like Manhattan above 14th Street)
 - Both cities' blocks, structures, and buildings were almost identical
 - What does this suggest?



Plumbing



BATHS



SEWERS



BATHROOMS

Achievements & Contributions

- Sewers & baths
 - Almost every home had a small bathroom
 - Drainage in the streets to clear waste



Planned Cities on the Indus

- Layout of Harappa & Mohenjo-Daro
 - Homes
 - At least two stories
 - All had a courtyard with a balcony
 - Most had a small well and bathtub
 - Water
 - In Mohenjo-Daro a basin known as the Great Bath was built
 - Running water
 - Shows emphasis on cleanliness & purification



Made Toys For Children



Government

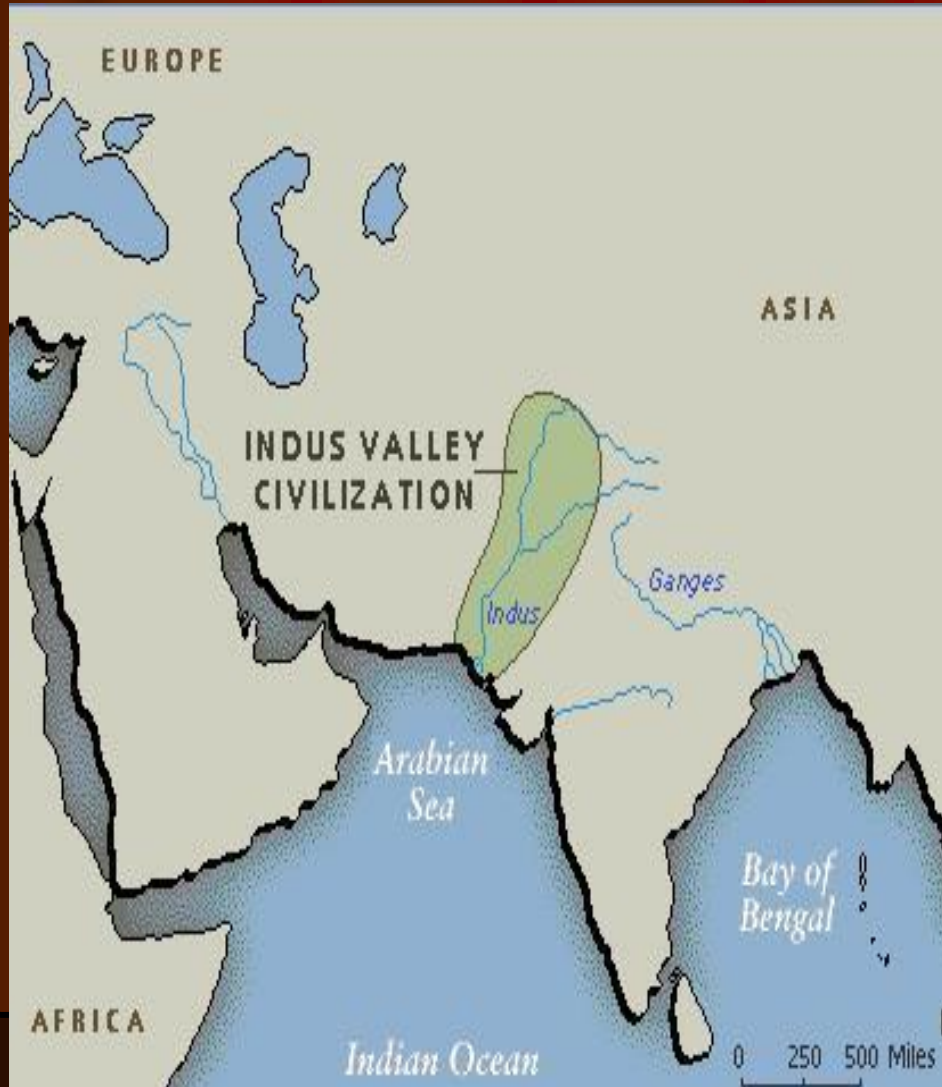
- Rulers within the cities of the Indus Valley governed through the control of trade and religion rather than military strength.
- The rulers carried seals with animal symbols
- No monuments built to rulers; no palaces
- Believed to be an egalitarian society
 - City-states were controlled by a small number of merchants, landowners and religious leaders

Bull seal



Priest-King Statue





The Arabian Sea

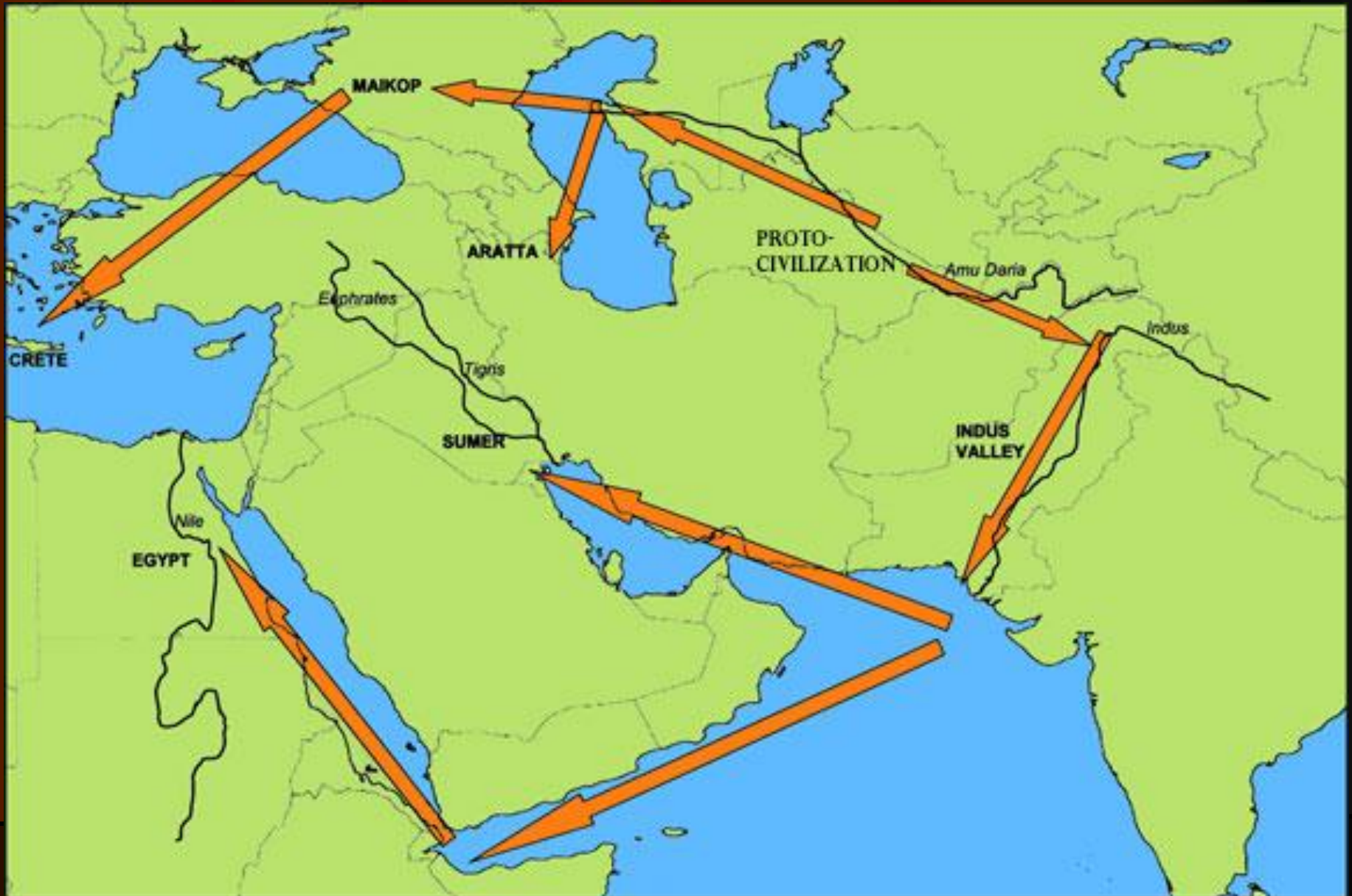
- Trade with other civilizations

Trade with Sumer

- Most of the people of the Indus valley were farmers. They were the first people to grow cotton and weave it into cloth.
- There is early evidence of trade with other civilizations including Sumer.



Trade – Early River Civilizations



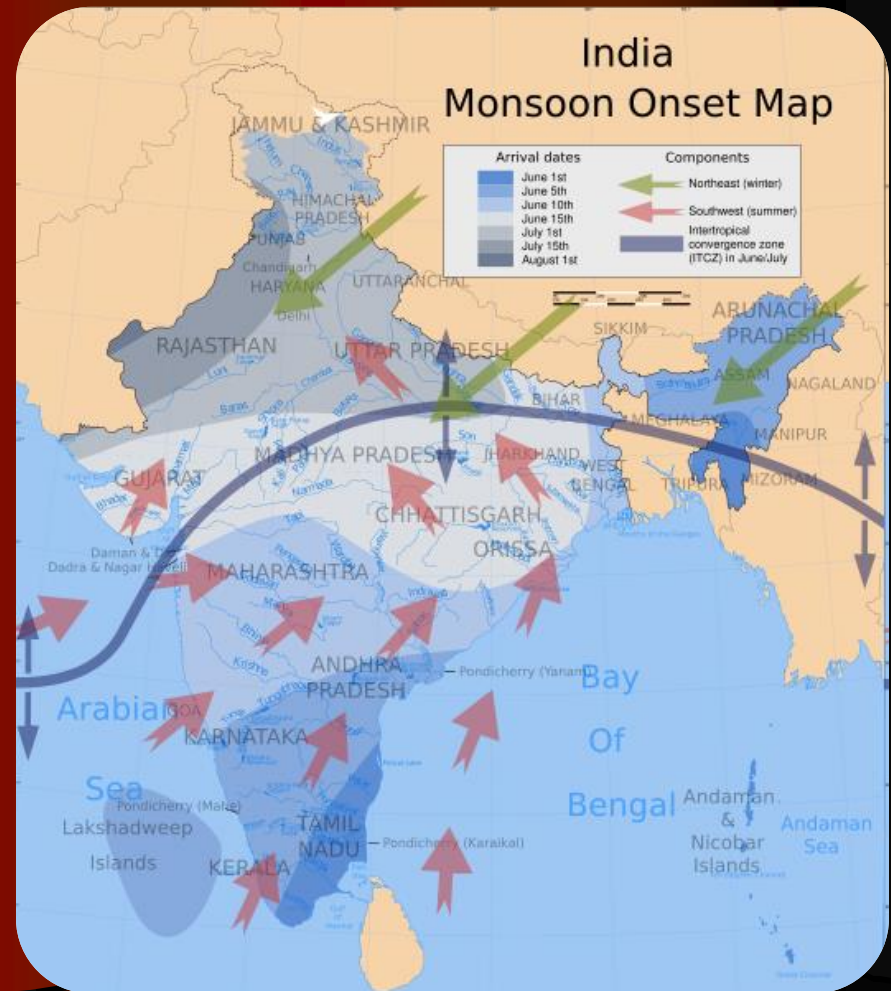
Monsoons?



- **Seasonal winds that bring torrential rainfall during the summer months**

Geography & It's Impact

- The Monsoons
 - Seasonal winds in the winter and summer.
 - If easterly winter winds prevailed, then there was drought
 - If westerly summer winds prevailed, then there was severe flooding



Interesting Facts

- **Q: Were citizens of the IRV rich or poor?**
- **A: Evidence has shown us that there was social equality in the IRV and that no real social classes existed**
- **Q: Were they a peaceful society?**
- **A: A war has never been recorded involving the people of the IRV and few, if any, weapons have been found**

Achievements & Contributions

- First to weave cotton
- Used bricks to build structures
 - Mud bricks
 - Wood bricks

Standard size
weights and
measurements



Mysterious Decline



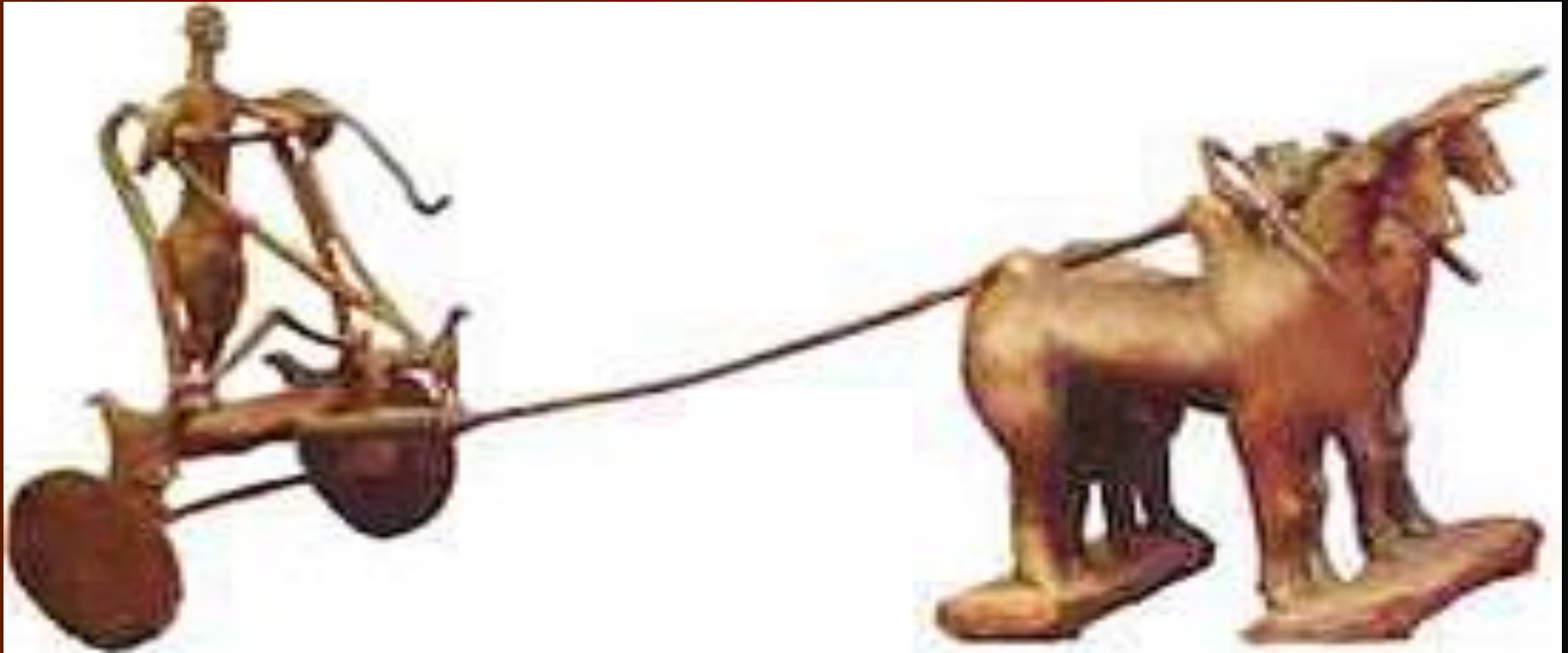
- **River Problems?**
 - **Indus River changed course and floods no longer fertilized the fields near the cities**



Natural Disaster?



Invaders?



- **Belief that Aryan nomads traveled through mountains & attacked the peaceful IRV**